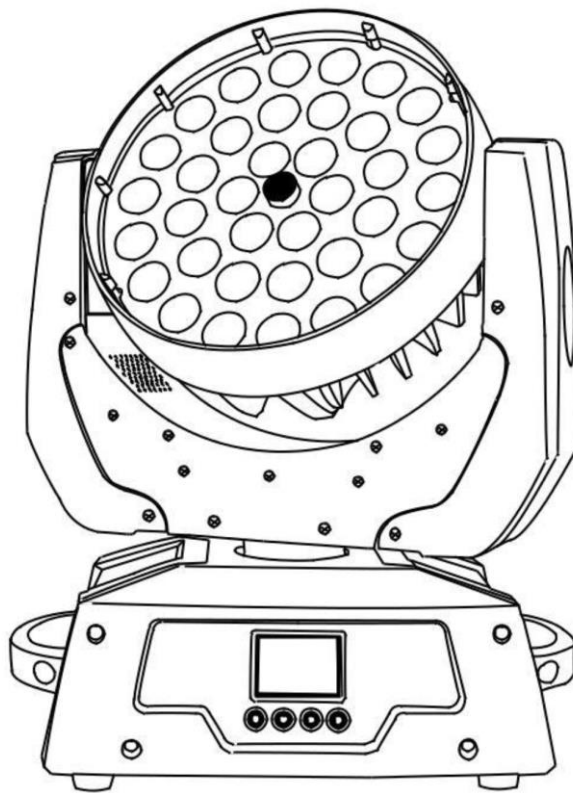


## Eye 360 Led

### LED WASH



This product manual contains important information about the safe installation and use of this projector. Please read and follow these instructions carefully and keep this manual in a safe place

User manual

**Please read the instructions carefully before use**

## TABLE OF CONTENTS

1. Safety Instructions.....	3
2. Installation .....	4
3. Features & Specifications .....	5
5. Operating Instructions.....	6
7. DMX-512 Control Connections.....	7
8. Menu .....	8
9. DMX Channels .....	9
10. Maintenance and Cleaning.....	10
11. Troubleshooting .....	11

## STATEMENT

The product has full capability and intact packing when leaves factory. All the users should comply with provided warnings and manual. Any damages caused by misuse are not included in our guarantee. We cannot be responsible for any malfunctions & problems owing to ignoring the manual.

## **1. Safety Instructions**

- Please keep this User Guide for future consultation. If you sell the unit to another user, be sure that they also receive this instruction booklet.
- Unpack and check carefully there is no transportation damage before using the unit.
- Before operating, ensure that the voltage and frequency of power supply match the power requirements of the unit.
- It's important to ground the yellow/green conductor to earth in order to avoid electric shock.
- The unit is for indoor use only. Use only in a dry location.
- The unit must be installed in a location with adequate ventilation, at least 50cm from adjacent surfaces. Be sure that no ventilation slots are blocked.
- Disconnect main power before replacement or servicing.
- Make sure there are no flammable materials close to the unit while operating as it is fire hazard.
- Use safety cable when fixes this unit. DO NOT handle the unit by taking its head only, but always by taking its base.
- Maximum ambient temperature is  $T_a$ : 40°C. DO NOT operate it where the temperature is higher than this Unit surface temperature may reach up to 85°C.
- DO NOT touch the housing bare-hands during its operation. Turn off the power and allow about 15 minutes for the unit to cool down before replacing or serving.
- In case of serious operating problem, stop using the unit immediately. Never try to repair the unit by yourself. Repairs carried out by unskilled people can lead to damage or malfunction. Please contact the nearest authorized technical assistance centre. Always use the same type spare parts.
- DO NOT touch any wire during operation as high voltage might be causing electric shock.

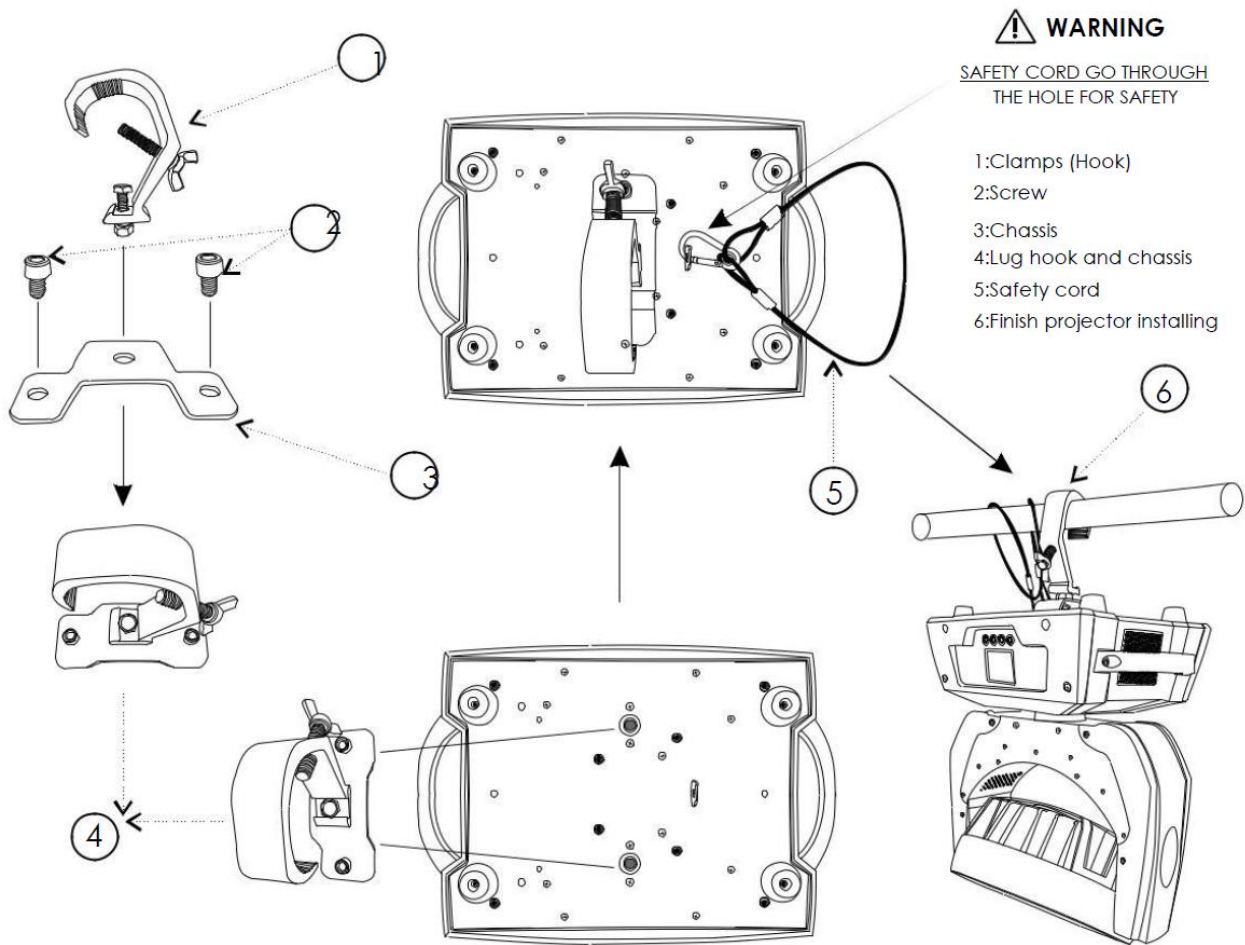
### **Warning:**

- To prevent or reduce the risk of electrical shock or fire, do not expose the unit to rain or moisture.
- DO NOT open the unit within five minutes after switching off.
- The housing, the lenses, or the ultraviolet filter must be replaced if they are visibly damaged.

### **Caution:**

There are no user serviceable parts inside the unit. DO NOT open the housing or attempt any repairs by yourself. If your unit requires service, please contact your nearest dealer.

## 2. Installation



Take 1 hook and 1 safety cord out from the package and x the hook on the chassis, and fasten the hook with the chassis to the underside of fixture with 2 screws, Hang the fixture on the structure and fasten the screws attached to the hook. (See the **WARNING** on the underside of the base as shown above) Always ensure that the projector is firmly anchored to avoid vibration and slipping whilst functioning. Always ensure that the structure, that you are going to mount the projector on, is secure and is strong enough to support a weight of each projector.

### **WARNING:**

The projector **MUST** be lifted or carried by the **HANDLES** instead of clamps.  
For safety the safety cord should afford 10 times of the unit's weight.

### 3. Features & Specifications

**VOLTAGES:**

100V~240V AC · 50/60Hz

**POWER CONSUMPTION:**

400W@220V

**LED:**

Power consumption: 12W(RGBW)

Quantity: 36pcs

Manufacturers Rated LED Lifespan: 50000 Hours

**COLOURS:**

RGBW linear color mixing

**DIMMER:**

0-100% linearly adjustable

**STROBE:**

Electronic Strobe 0 ~25F.P.S

**PAN AND TILT:**

PAN(0°~540°) and TILT(0°~270) , User-selectable Pan/Tilt ranges

**ZOOM ANGLE:**

10°~55°

**CONTROL:**

DMX512, 3 pins interfaces DMX Control Protocol

18 channels in standard mode, and 25 channels in extended mode, Master/Slave Synchronous

**Control Mode:**

DMX512 / Master-Slave / Auto

**HOUSING:**

Flame retardant engineering plastic shell/cast aluminum, Ip20

**WORK ENVIRONMENT TEMPERATURE:**

-10°C~40°C

**CARTONS PACKING DIMENSION:**

**Inner:** 460x335x385 (mm) **Outer:** 435x345x480 (mm)

**WEIGHT:**

Net weight :9.6Kg| Gross Weight: 13.0Kg

**DIMENSIONS [mm]:**

## **4. Operating Instructions**

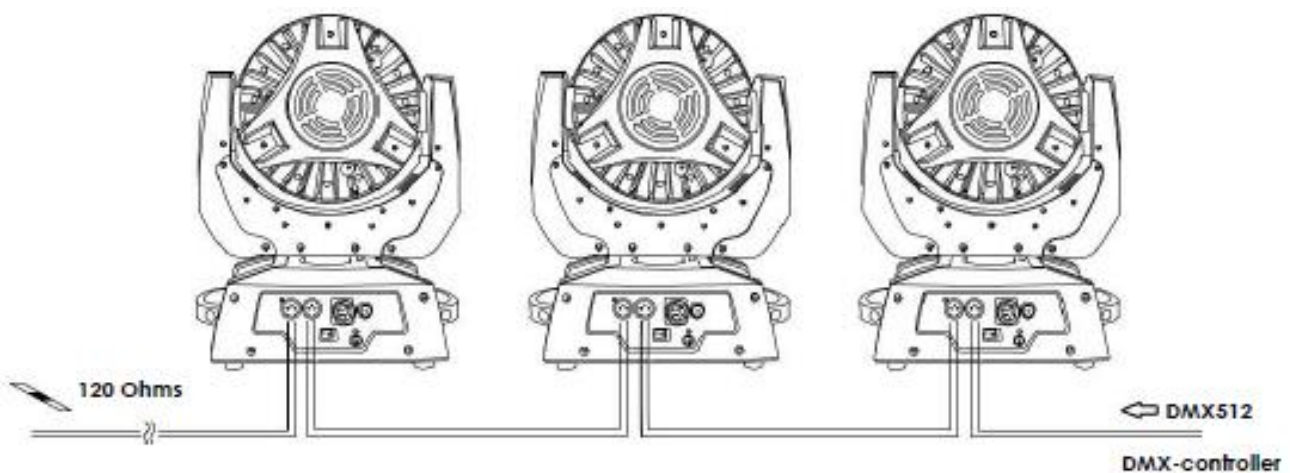
- The moving head is for spot effect for on-site decoration purpose.
- Don't turn on the fixture if it's been through severe temperature difference like after transportation because it might damage the light due to the environment changes. So make sure to operate the fixture until it is in normal temperature.
- This light should be keep away from strong shaking during any transportation or movement.
- Don't pull up the light by only the head, or it might cause damages to the mechanical parts.
- Don't expose the fixture in overheat, moisture or environment with too much dust when installing it. And don't lay any power cables on the floor. Or it might cause electronics shock to the people.
- Make sure the installation place is in good safety condition before installing the fixture.
- Make sure to put the safety chain and check whether the screws are screwed properly when installing the fixture.
- Make sure the lens are in good condition. It's recommended to replace the units if there are any damages or severe scratch.
- Make sure the fixture is operated by qualified personnel who know the fixture before using.
- Keep the original packages if any second shipments is needed.
- Don't try to change the fixtures without any instruction by the manufacturer or the appointed repairing agencies.
- It is not in warranty range if there are any malfunctions from not following the user manual to operate or any illegal operation, like shock short circuit, electronic shock, lamp broke, etc.

## 5. DMX-512 Control Connections

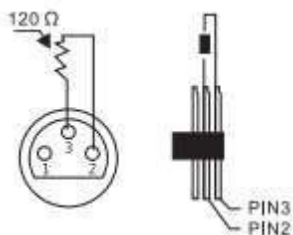
Connection between controller and projector and between one projector and another must be made with a 2 core-screened cable, with each core having at least a 0.5mm diameter. Connection to and from the projector is via cannon 3 pin XLR plugs and sockets. The XLR's are connected as shown in the figure above.

**Note:** Ensure that none of the pins touch the metallic body of the plug or each other. The body of the plug is not connected in any way. The projector accepts digital control signals in protocol DMX512 (1990).

Connect the controller's output to the first fixture's input, and connect the first fixture's output to the second fixture's input and connect the rest fixtures in the same way. Eventually connect the last fixture's output to a DMX terminator as shown in the figure below.



### TERMINATOR:



## 6. Menu

### Setting DMX Start Address

Each projector must be given a DMX start address, so that, the correct projector responds to the correct control signals. This DMX start address is the channel number from which the projector starts to "listen" to the digital control information being sent out from the controller. The fixture have 3 DMX modes. There are simple mode, standard mode and extended mode. For example standard mode has 15 channels, so set the No. 1 projector's address 001, No. 2 projector's address 016, No. 3 projector's address 031, No. 4 projector's address 046 and so on.

Launch the projector. Press button **ENTER** more than 5 seconds to unlock panel.

Press button **ENTER** to display **DMX address**.

Press button **UP** or **DOWN** , you can set the address.

Press button **ENTER** to confirm, which means the projector has saved the Start Address automatically, when powered on next time, it will display the value saved last time.

Press button **UP** or **DOWN** to change values (add or subtract).

Press button **FUNC**, to return to the upper menu one by one.

### Configuration:

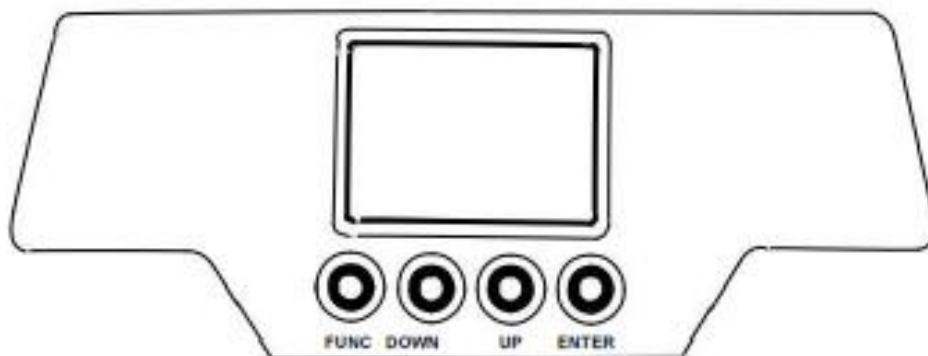
Press button **ENTER** to unlock panel. Menu will be displayed on the screen. Each menu has its own sub-menu. Each menu has specific function. Please refer to "Operation Menu" below for details.

Press button **UP** or **DOWN** if you want to browse or change through the various Setup Options.

Press button **ENTER** to save your settings or enter the next menu.

Press button **UP** or **DOWN** to change values.(Add or subtract)

Press button **FUNC** , it will return to the upper menu one by one.





## 7. DMX Channels

18	Mode chanel	Function	Instruction
1		Pan	0-255
2		Tilt	0-255
3		Pan Fine	0-255 (16 bit)
4		Tilt Fine	0-255 (16 bit)
5		Motor Speed	0-255 From fast to slow
6		Dimmer	0-255 (0-100% dimming)
7		Shutter	0-255 Strobe Slow to fast (0 is open)
8		Red	0-255 (linear)
9		Green	0-255 (linear)
10		Blue	0-255 (linear)
11		White	0-255 (linear)
12		Chose Color	0-255 (build in color makro)
13		Ring Control	0-60: all rings work together 61-120: First Ring 121-180: Second Ring 181-255: Third Ring
14		Makro	0-10 No Makro 10< Makro ON
15		Makro Speed	0-255 From slow to fast
16		Zoom	0-255 Zoom range
17		XY Motor	0-64: no effect 64-128: X motor reverse 129-192: Y motor reverse 193-255: XY motor reverse
18		Reset	0-64: No effect 65-128: Auto mode 129-192: Sound mode 193-255: Reset

25 Mode channel	Function	Instruction
1	Pan	0-255
2	Tilt	0-255
3	Pan Fine	0-255 (16 bit)
4	Tilt Fine	0-255 (16 bit)
5	Motor Speed	0-255 From fast to slow
6	Dimmer	0-255 (0-100% dimming)
7	Shutter	0-255 Strobe Slow to fast (0 is open)
8	Red	0-255 (linear) Ring 1
9	Green	0-255 (linear) Ring 1
10	Blue	0-255 (linear) Ring 1
11	White	0-255 (linear) Ring 1
12	Red	0-255 (linear) Ring 2
13	Green	0-255 (linear) Ring 2
14	Blue	0-255 (linear) Ring 2
15	White	0-255 (linear) Ring 2
16	Red	0-255 (linear) Ring 3
17	Green	0-255 (linear) Ring 3
18	Blue	0-255 (linear) Ring 3
19	White	0-255 (linear) Ring 3
20	Chose Color	0-255 (build in color makro)
21	Makro	0-10 No Makro 10< Makro ON
22	Makro Speed	0-255 From slow to fast
23	Zoom	0-255 Zoom range
24	XY Motor	0-64: no effect 64-128: X motor reverse 129-192: Y motor reverse 193-255: XY motor reverse
225	Reset	0-64: No effect 65-128: Auto mode 129-192: Sound mode 193-255: Reset

## 10. Maintenance and Cleaning

To prolong a Projector's life, regular maintenance should be done for its LED optical system, to ensure that the system is in its best operational condition. If the projector does not work properly, check the fuses on the power socket of the projector, if it is burned, they should only be replaced by fuses of the same specification. Should these be damaged, call a qualified technician before replacement. The projector has thermal protection device that will switch off the projector in case of overheating. Should this occur, check if the fans work normally or fan and fan shield are blocked by dust.

**Any maintenance work should only be carried out by qualified technicians.**

It is definitely necessary to keep a projector clean for its reliable use. Cooling fans and their shield should be cleaned every 15 days. LED lamps' lens and cover should be cleaned regularly for optimized light output.

Cleaning frequency depends on how often a projector is used and its operational environment. A soft cloth and typical glass cleaning products should be used. It is recommended to clean the external optics at least once every 20 days.

**Do not use any organic solvent, e.g. alcohol, to clean the housing of the apparatus.**

## **11. Troubleshooting**

PROBLEM	ACTION
The projector can't be started	<ul style="list-style-type: none"> <li>&gt; Power Cable not connected well</li> <li>&gt; Power supply damaged or not connected well, a qualified Technician should be required</li> <li>&gt; Control board not connected well and a qualified Technician should be</li> </ul>
The lamp can be started, but LED lamps are off and not controlled	<ul style="list-style-type: none"> <li>&gt; LED boards not connected properly, a qualified technician is needed</li> </ul>
A projector's lamps are on but it doesn't respond to the controller	<ul style="list-style-type: none"> <li>&gt; Make sure that the projector's start address is correctly set</li> <li>&gt; Replace or repair the DMX cable.</li> </ul>
The beam appears dim and its brightness slows sharply	<ul style="list-style-type: none"> <li>&gt; Ambient temperature too high which results in a projector overheating, necessary ventilating measures needed.</li> </ul>